

T600+D600

Premium DTF printer with premium white ink



Suitable for clothing, hats and shoes with a variety of fabrics Equipped with self-developed YiPS printing system + YilioS cloud management system



Specification

Model		Model
	T602 / T604	D600 powder shaker & dryer
Printhead Specification		Operation Mode
PrmtheadModel	Epson-i3200	Support language between multiple languages such as Chinese and English
PrmtheadNumber	2 / 3 / 4	
Printing Specification		
Print Speed	(2H4C) 720*1800dpi 6pass 12m ² /h	Printable Media Widths
	(4H4C) 720*1800dpi 6pass 24m ² /h	
	(3H8C) 720*1800dpi 6pass 12m ² /h	0-600mm
Best Resolution	720*2400dpi	Suitable Media
Printing Media		Nylon, Chemical fibres,Cotton, Swimwear, Wetsuits, PVC,EVR
Print Media	DTF Film	
Media Width	700mm (Up to 700mm)	Powdering Control
Printable Width	600mm	
Print Specs		Control of shaking and spreading of powder Control of direction and amount
Rating	TPU Grating	
Drive System	Belt Driv	Heating And Drying Function
Unwinding & Rewinding	Damping Unwinding System + Electric Dual Power Rewinding	
Suction platform	Independent Intelligent Adjustable Suction Platfotm	Front guide heating, upper drying and curing; Double row cold air cooling function
Ink Feeding System	Siphon (positive pressure)	Material Transfer Method
Ink Tank Volume	1000mL	
Operation System		Mesh belt conveyor, guide belt type
Printer RIP	Maintop 61, or Other RIPs	Winding Function
Data Transfer Connection	Gigabit LAN port	
Operation System	Windows7 or higher	Automatic induction winding
Operation Environment		Electrical Parameters
Power Supply	AC220V, 50Hz/60Hz	Rated voltage 220V; 50Hz/60Hz; Rated power 4.5KW
Operation Environment	22-28°C	
Power	1000w	Printer Size (Length * Width * Height)
Printer Size (Length * width * height)		
Machine Dimension	1800*850*1550mm	Machine: 2380*1080*1100mm Package: 1800*1160*1240mm
Package Size	2253*753*840mm 224KG	

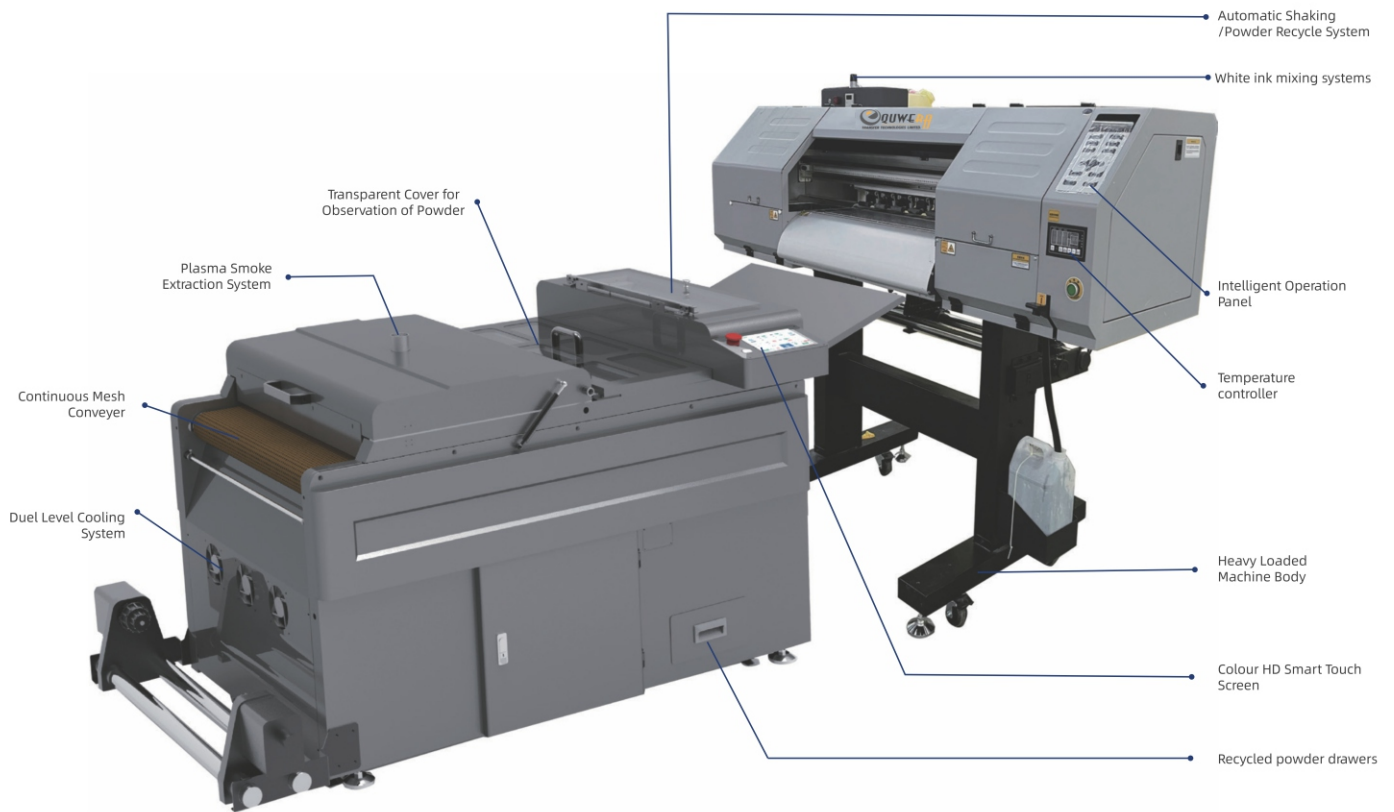
Equwera Transfer Technologies Limited

Office : Room 508, No.22, Lane 1, Xiangyun East, Longgui Xu, Taihe Town, Baiyun District, Guangzhou, Guangdong, China.

Mobile: +86 18664620866 **E-mail:** cancy228@163.com

Warehouse : D 136, Hongseng International Logistic centre, G106 East Road, Junhe Street, Xinke Town, Baiyun District, Guangzhou, PR China.

Machine



► Scheme



◀ denim



◀ T-shirt



◀ pillows



◀ sweatshirts



▲ hats

is therefore not limited by material
Suitable for any fabric

shoes ▶



canvas bags ▶



► Scheme

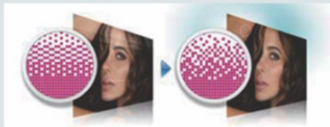


► Process



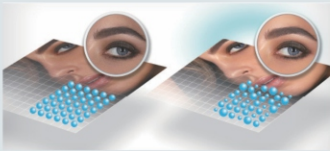
► System

Nozzle



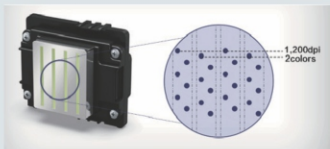
Micro feathering

New feathering technology control ink drop so as to compensate paper feeding error and other defect.



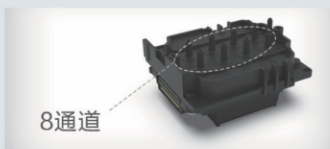
Support for greyscale

Epson's unique Variable Sized Droplet Technology (VSDT) delivers smooth gradation with sharp detail by freely control to eject the droplet volume.



1200 dpi

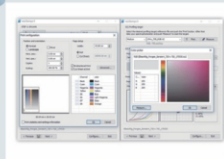
1200 dpi highest resolution with excellent picture and graphic art output.



Versatile color configuration

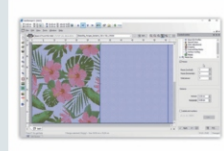
up to 8 ink channels, more ink and color possibilities

Color



Color tuning wizard

Easy-going and clear color tuning software, matching color with calibrated screen.



Color library matching

Color library matching and color swatch book.



Color calibration wizard



Virtual simulation

Simulate your design color pattern on virtual design software